

# ECO BRAN

**GRASSHOPPER INSECTICIDE**

**AGRICULTURAL**

**WHEAT BRAN INSECTICIDE**

**Guarantee: Carbaryl 2%**

Warning, contains the allergens soy and wheat.

Contains 1,2-benzisothiazolin-3-one at 0.00098% as a preservative

**READ THE LABEL BEFORE USE  
KEEP OUT OF REACH OF CHILDREN**



**CAUTION POISON**

**REGISTRATION NO. 25815 PEST CONTROL PRODUCTS ACT**

**IN CASE OF EMERGENCY, CALL DAY OR NIGHT COLLECT  
1-416-634-2359**

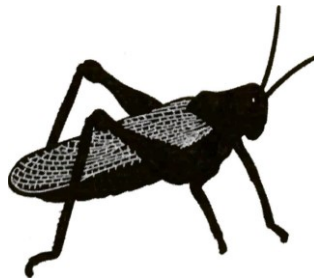
**Manufactured by  
PEACOCK INDUSTRIES**

**Box 750**

**Hague, Saskatchewan, Canada S0K 1X0**

**NET CONTENTS 20 KG.**

**For the control of grasshoppers in pastures, roadsides, forages,  
cereal crops and waste areas.**



<b>GROUP</b>	<b>1A</b>	<b>INSECTICIDE</b>
--------------	-----------	--------------------

## ENVIRONMENTAL PRECAUTIONS:

TOXIC to birds, mammals and aquatic organisms.

To reduce runoff from treated areas into aquatic habitats, consider the characteristics and conditions of the site before treatment. Site characteristics and conditions that may lead to runoff include, but are not limited to: heavy rainfall, moderate to steep slope, bare soil, poorly draining soil (e.g. soils that are compacted or fine textured such as clay).

Contamination of aquatic areas as a result of runoff may be reduced by including a vegetative strip between the treated area and the edge of the water body.

Avoid application of this product when heavy rain is forecast.

## USE PRECAUTIONS

- KEEP OUT OF REACH OF CHILDREN. HARMFUL IF INHALED OR SWALLOWED. Avoid breathing dust or vapour from bait. Use only in well ventilated areas. Do not take internally. May cause eye irritation. Avoid contact with eyes and skin. Wash thoroughly after handling and before eating or smoking. Avoid contamination of feed and foodstuffs. Keep away from heat, sparks and open flame.

If this pest control product is to be used on a commodity that may be exported to the U.S. and you require information on acceptable residue levels in the U.S., contact 1-800-375-4648 or [www.cropro.org/](http://www.cropro.org/)

This product is not to be used in and around homes or other residential areas such as parks, schools, public buildings, playing fields or any other areas where the general public including children could be exposed.

- Not for indoor use.
- This product is not to be used in and around homes or other residential areas such as parks, schools, public buildings, playing fields or any other areas where the general public including children could be exposed.
- Not for use in greenhouses (vegetable or ornamental).
- Not for use on turf, golf courses, sod farms, residential ornamentals or residential gardens
- Keep the following personal protective equipment immediately available for use in case of emergency (i.e., a broken package, spill, or equipment breakdown): chemical-resistant coveralls, chemical-resistant gloves, chemical-resistant head gear and a respirator.

Store apart from food and feeds. To avoid accidental poisoning of livestock and pets:

1) Do not transfer product to other containers. If excess product must be stored, keep bag tightly closed and store in places not accessible to animals or children.

2) Load application equipment at work site only! Do not load applicators in farm yards where animals, pets and children are likely to be exposed. Clean up spilled bait immediately.

3) Do not allow product to contaminate feed troughs or drinking water.

This product can freeze

### Mixing/Loading

- Wear cotton coveralls over long pants and a long-sleeved shirt, shoes plus socks and chemical resistant gloves.
- Do not mix and load by hand or with hand held equipment.

### Applying

- Do not apply by hand or handheld equipment. Use an open or closed cab broadcast spreader.
- Wear cotton coveralls over long pants and a long-sleeved shirt, shoes plus socks and chemical resistant gloves.

### **DIRECTIONS FOR USE**

- For ground application only. **DO NOT APPLY BY AIR.**
- Using Peacock Industries bran applicator/spreader or like equipment (Valmar), apply product as blanket over affected areas or as preventive strip on side of field where insects are present.
- Apply 2-4 kg bait/ha broadcast evenly over the area to be treated for control of grasshoppers. The higher rate should be use for older grasshoppers or severe infestations.
- Apply when pest emergence is at its peak and population are above the economic threshold. Consult local agricultural authorities or company representative for further information on local economic thresholds and timing of application.
- Repeat application only as necessary but not more frequently than once a week during periods of heavy infestation and once every two weeks during moderate to low infestation.

### **PRE-HARVEST INTERVALS (PHIs)**

<b>Crop</b>	<b>PHI/livestock reentry period (days)</b>
corn (field & sweet)	1
alfalfa clover	2
beans	5
oats, rye, wheat	14
barley sweet white lupin	28
canola	treat only seedlings

field borders, headlands, rights-of-way, roadsides, wastelands	0
entry of beef cattle or other livestock to pastures, rangelands or forage grasses	1
entry of dairy cattle to pastures or rangelands, harvest of forage crops	2

### **RESTRICTED-ENTRY INTERVAL (REI)**

All activities: 12 hours.

### **FIRST AID**

If on skin or clothing, take off contaminated clothing. Rinse skin immediately with plenty of water for 15–20 minutes. Call a poison control centre or doctor for treatment advice.

If in eyes, hold eye open and rinse slowly and gently with water for 15–20 minutes. Remove contact lenses, if present, after the first 5 minutes, then continue rinsing eye. Call a poison control centre or doctor for treatment advice.

If swallowed, call a poison control centre or doctor immediately for treatment advice. Have person sip a glass of water if able to swallow. Do not induce vomiting unless told to do so by a poison control centre or doctor. Do not give anything by mouth to an unconscious person.

Take container, label or product name and Pest Control Product Registration Number with you when seeking medical attention.

### **TOXICOLOGICAL INFORMATION**

Carbaryl is a carbamate which is a cholinesterase inhibitor. Typical symptoms of overexposure to cholinesterase inhibitors include malaise, muscle weakness, dizziness, and sweating. Headache, salivation, nausea, vomiting, abdominal pain and diarrhea are often prominent. A life-threatening poisoning is signified by loss of consciousness, incontinence, convulsions and respiratory depression with a secondary cardiovascular component. Treat symptomatically. If exposed, plasma and red blood cell cholinesterase tests may indicate degree of exposure (baseline data are useful). However, if a blood sample is taken several hours after exposure, it is unlikely that blood cholinesterase activities will be depressed, due to rapid reactivation of cholinesterase. Atropine, only by injection, is the preferable antidote. Do not use pralidoxime. In cases of severe acute poisoning, use antidotes immediately after establishing an open airway and respiration. With oral exposure, the decision of whether to induce vomiting or not should be made by an attending physician.

### **RESISTANCE-MANAGEMENT RECOMMENDATIONS**

For resistance management, please note that Eco Bran Grasshopper Insecticide Agricultural contains a Group 1A insecticide. Any insect population may contain individuals naturally resistant to Eco Bran Grasshopper Insecticide Agricultural and other Group 1A insecticides. The resistant individuals may dominate the insect population if this group of insecticides are used repeatedly in the same fields. Other resistance mechanisms that are not linked to site of action but are specific for individual chemicals, such as enhanced metabolism, may also exist. Appropriate resistance-management strategies should be followed.

To delay insecticide resistance:

- Where possible, rotate the use of Eco Bran Grasshopper Insecticide Agricultural or other Group 1A insecticides with different groups that control the same pests in a field. Avoid application of more than 4 and consecutive sprays of Eco Bran Grasshopper Insecticide Agricultural or other insecticides in the same group in a season.
- Insecticide use should be based on an IPM program that includes scouting, record keeping, and considers cultural, biological and other chemical control practices.
- Monitor treated pest populations for resistance development.
- Contact your local extension specialist or certified crop advisors for any additional pesticide resistance-management and/or IPM recommendations for the specific site and pest problems in your area.
- For further information or to report suspected resistance contact Peacock Industries at 306-225-4691 or [peacockwagner@sasktel.net](mailto:peacockwagner@sasktel.net)

#### **DISPOSAL**

Do not re-use empty bags/containers. Dispose of the bag/container in accordance with provincial requirements. For information on the disposal of unused, unwanted product, contact the manufacturer or the provincial regulatory agency. Contact the manufacturer and the provincial regulatory agency in case of a spill, and for cleanup of spills.

#### **NOTICE TO USER**

This pest control product is to be used only in accordance with the directions on the label. It is an offence under the *Pest Control Products Act* to use this product in a way that is inconsistent with the directions on the label. The user assumes the risk to persons or property that arises from any such use of this product.